

CCL21 Antibody (internal region)
Peptide-affinity purified goat antibody
Catalog # AF3191a**Specification**

CCL21 Antibody (internal region) - Product Information

Application	WB, Pep-ELISA
Primary Accession	O00585
Other Accession	NP_002980.1 , 6366
Reactivity	Human
Host	Goat
Clonality	Polyclonal
Concentration	0.5 mg/ml
Isotype	IgG
Calculated MW	14646

CCL21 Antibody (internal region) - Additional Information**Gene ID** 6366**Other Names**

C-C motif chemokine 21, 6Ckine, Beta-chemokine exodus-2, Secondary lymphoid-tissue chemokine, SLC, Small-inducible cytokine A21, CCL21, SCYA21

Dilution

WB~~1:1000

Pep-ELISA~~N/A

Format

0.5 mg/ml in Tris saline, 0.02% sodium azide, pH7.3 with 0.5% bovine serum albumin

Storage

Maintain refrigerated at 2-8°C for up to 6 months. For long term storage store at -20°C in small aliquots to prevent freeze-thaw cycles.

Precautions

CCL21 Antibody (internal region) is for research use only and not for use in diagnostic or therapeutic procedures.

CCL21 Antibody (internal region) - Protein Information**Name** CCL21**Synonyms** SCYA21**Function**

Inhibits hemopoiesis and stimulates chemotaxis. Chemotactic in vitro for thymocytes and

activated T-cells, but not for B-cells, macrophages, or neutrophils. Shows preferential activity towards naive T-cells. May play a role in mediating homing of lymphocytes to secondary lymphoid organs. Binds to atypical chemokine receptor ACKR4 and mediates the recruitment of beta-arrestin (ARRB1/2) to ACKR4.

Cellular Location

Secreted.

Tissue Location

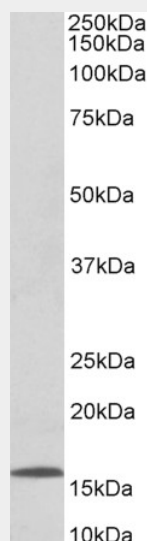
Highly expressed in high endothelial venules of lymph nodes, spleen and appendix. Intermediate levels found in small intestine, thyroid gland and trachea. Low level expression in thymus, bone marrow, liver, and pancreas. Also found in tonsil, fetal heart and fetal spleen

CCL21 Antibody (internal region) - Protocols

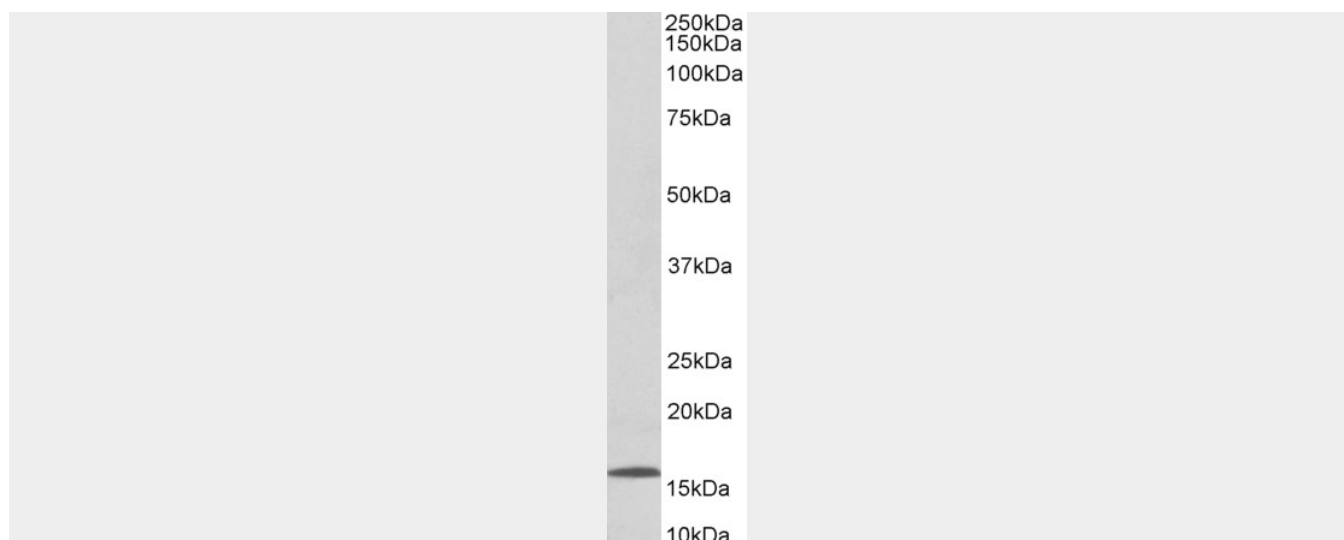
Provided below are standard protocols that you may find useful for product applications.

- [Western Blot](#)
- [Blocking Peptides](#)
- [Dot Blot](#)
- [Immunohistochemistry](#)
- [Immunofluorescence](#)
- [Immunoprecipitation](#)
- [Flow Cytometry](#)
- [Cell Culture](#)

CCL21 Antibody (internal region) - Images



AF3191a (0.1 µg/ml) staining of Human Lymph Node lysate (35 µg protein in RIPA buffer). Primary incubation was 1 hour. Detected by chemiluminescence.



EB10008 (0.1 μ g/ml) staining of Human Lymph Node lysate (35 μ g protein in RIPA buffer). Primary incubation was 1 hour. Detected by chemiluminescence.

CCL21 Antibody (internal region) - Background

This antibody may cross-react with mouse CCL21 (GeneID: 18829) and rat CCL21 (GeneID: 298006).

CCL21 Antibody (internal region) - References

Dendritic cell transfected with secondary lymphoid-tissue chemokine and/or interleukin-2 gene-enhanced cytotoxicity of T-lymphocyte in human bladder tumor cell S in vitro. Li YG, Wang ZP, Tian JQ, Tian BQ, Rodrigues R, Shang PF, Zhang T, Cancer investigation 2009 Nov 27 (9): 909-17. PMID: 19832038